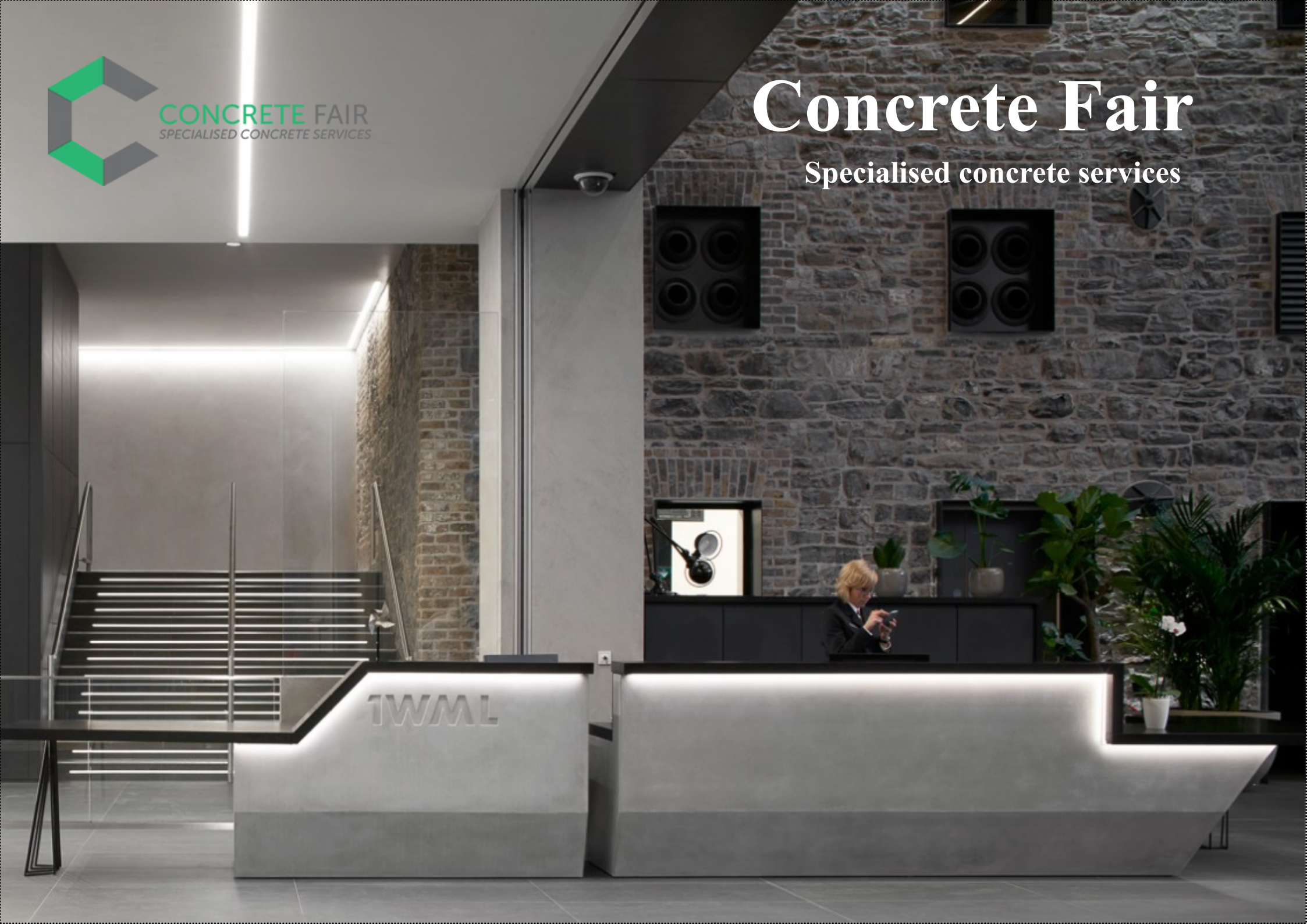




CONCRETE FAIR
SPECIALISED CONCRETE SERVICES

Concrete Fair

Specialised concrete services



Concrete Fair was established in Ireland in early 2016 by Pat Hally. We operated in Australia prior to this commencing in 2013. We are leading specialists in polished concrete (GFRC) manufacture and installation in Ireland and the UK. We produce hand crafted concrete pieces for commercial clients such as reception desks, vanities and sinks, corporate kitchen worktops, restaurant and bar retail counters and bar tops, meet 'n' greet stations etc etc... Our team has collectively over 65 years construction experience. We have carpenters and cabinet makers on our team along with fully trained GFRC specialists. We pride ourselves on delivering exceptional projects on time and to the highest standard.

Concrete Fair is based in South Tipperary and we service most counties in Ireland. We also undertake projects in the UK. This brochure is a portfolio of some of our commercial works over the last few years. We have a purpose built temperature controlled facility which is essential for smooth operation during the winter months.

Contact

Office +353 52 61 72622

Marie Hally *Office Manager* +353 83 8189379

Pat Hally *Director* +353 87 3564020

Email info@concretefair.ie



Featured projects

Windmill Lane Dublin Reception desk and mobile cafe tall tables by MOLA Architects and Specialist Joinery Group

Private Client Dublin

BPFI Dublin Reception Desk by MOLA and T&I Fitouts Ltd

Hubspot Reception Desk by GEM Group

Core Media Dublin by Fewer and Harrington Architects and T&I Fitouts Ltd

Kevin Street Garda Station by OPW and JJ Rhatigan

Imperial College of Surgeons London by ISG Architects and Atlantic Contracts UK

CAMIDA reception desk by Cash Powell Design

Warner Bros London by ISG Architects and Specialist Joinery Group

ICONIC Thomas St Dublin by ODOS Architects and CGDM

Cherrywood APC Labs by RKD Architects and CLANCY

Boston Scientific Galway by PM Group and SISK

GPO Dublin by Kavanagh Tuite Architects and Dunwoody & Dobson

Perpetua GYM Dublin by Pure Fit Outs

The Mayson Hotel by O'Donnell O'Neill Architects and Pure Fit Outs

Perpetua GYM Dublin by Pure Fit Outs

Trinity College Donor Wall by Joanne Byrne Designer and Branding by Vision Branding

Lettermullen House Connemara by Peter Legge Architects and Greentec

Wall mounted wash hand basin by Concrete Fair

Howth House fire hearth by PAC Studio Architects and Moston

Zendesk External Signage and Corporate Kitchen by MOLA and Truwood

The Concrete Fair Workshop



Private Client Dublin Wall panelling



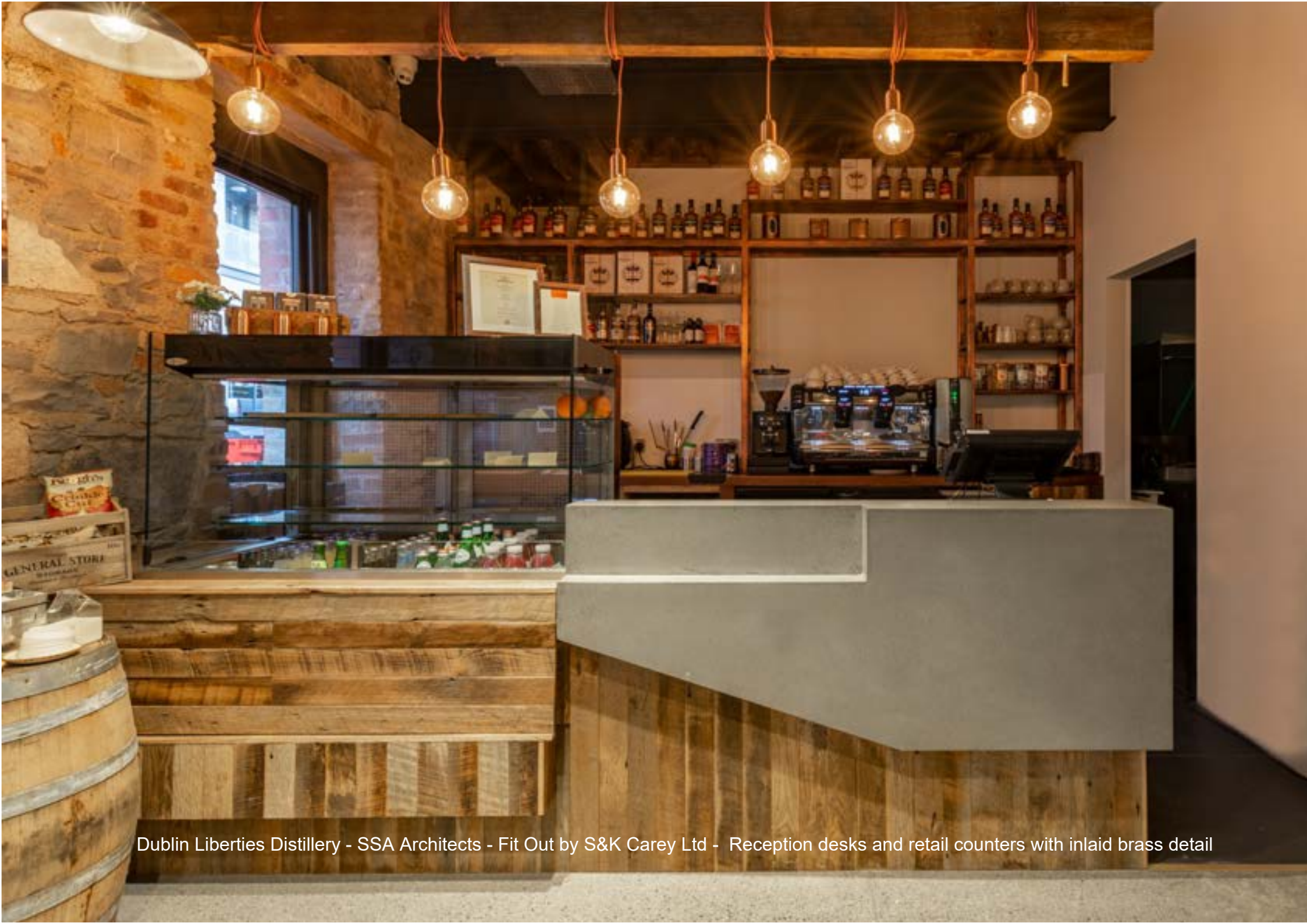
Private Client Dublin Wall panelling



Dublin Liberties Distillery - SSA Architects - Fit Out by S&K Carey Ltd - Reception desks and retail counters with inlaid brass detail



Dublin Liberties Distillery - SSA Architects - Fit Out by S&K Carey Ltd - Reception desks and retail counters with inlaid brass detail



Dublin Liberties Distillery - SSA Architects - Fit Out by S&K Carey Ltd - Reception desks and retail counters with inlaid brass detail



Dublin Liberties Distillery - SSA Architects - Fit Out by S&K Carey Ltd - Reception desks and retail counters with inlaid brass detail



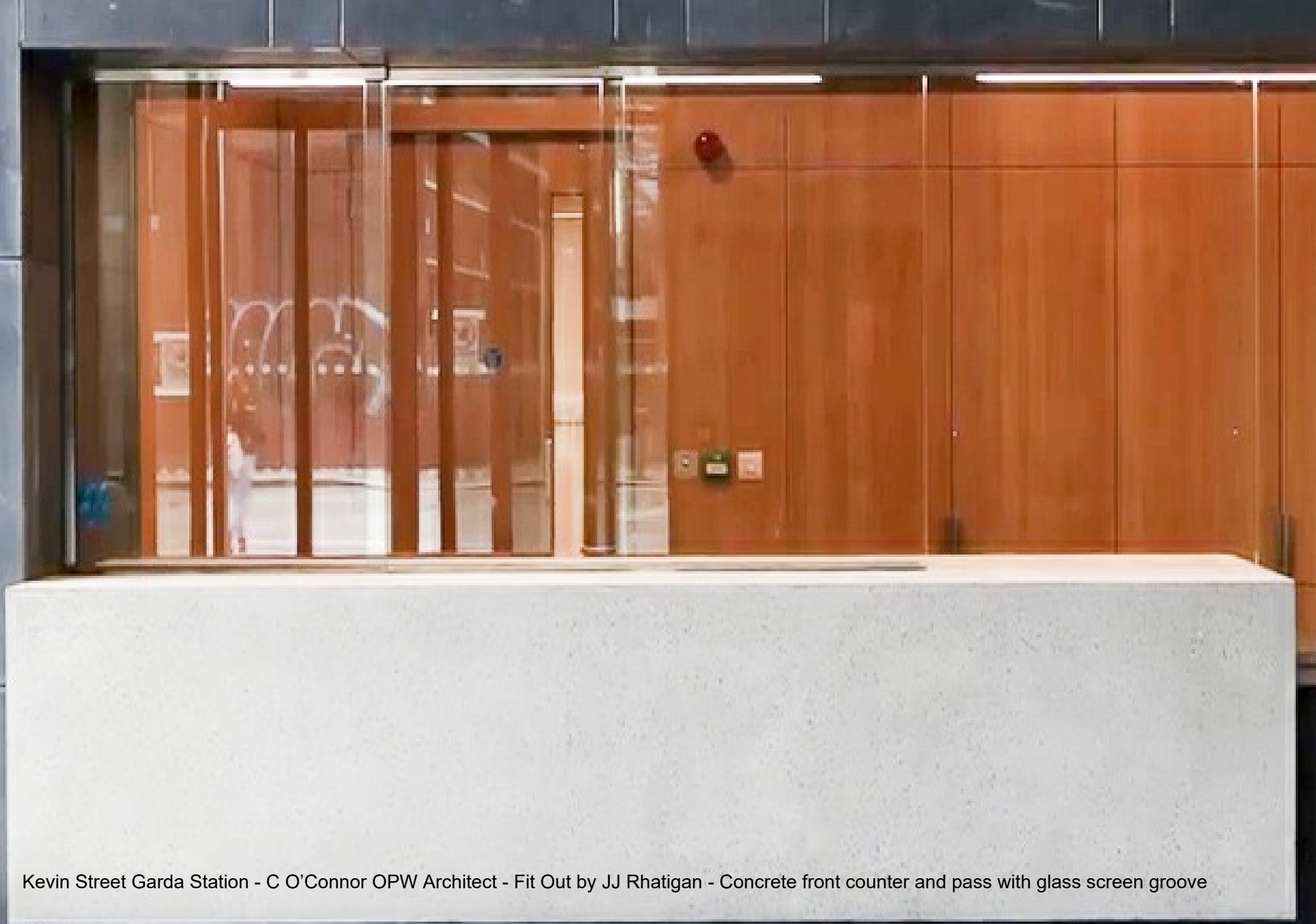
Hubspot 1 SJR Quay- Henry J Lyons Architects - Fit Out by GEM Group - Concrete reception desk front panel and desktop made in one single piece



BPFI Dublin - MOLA Architects - Fit Out by T&I Fit Outs - Reception Desk with an inlaid brass design.



Core Media- Fewer Harrington & Partners Architects - Fit Out T&I Fit Outs - Concrete reception desks with brass inlaid design



Kevin Street Garda Station - C O'Connor OPW Architect - Fit Out by JJ Rhatigan - Concrete front counter and pass with glass screen groove



Imperial College of Surgeons London- ISG Architects - Fit Out by Atlantic Contracts UK - 4 meter post tensioned reception desk

CAMIDA



CAMIDA by Eileen Powell of Cash Powell Design - Reception desk with cabinet surround and foyer table



Warner Bros London- ISG Architects - Fit Out by SJG Group - Concrete podiums, plinths, countertops and greeting desks



Warner Bros London- ISG Architects - Fit Out by SJG Group - Concrete podiums, plinths, countertops and greeting desks



Warner Bros London- ISG Architects - Fit Out by SJG Group - Concrete podiums, plinths, countertops and greeting desks



Warner Bros London- ISG Architects - Fit Out by SJG Group - Concrete podiums, plinths, countertops and greeting desks



ICONIC Thomas St. Dublin - ODOS Architects - Fit Out by CGDM- Range of concrete troughs with brass accessories



ICONIC Thomas St. Dublin - ODOS Architects - Fit Out by CGDM- Range of concrete troughs with brass accessories



ICONIC Thomas St. Dublin - ODOS Architects - Fit Out by CGDM- Range of concrete troughs with brass accessories



APC Labs Cherrywood - RKD Architects - Fit Out by CLANCY- Range of concrete troughs



Boston Scientific - PM Group Architects - Fit Out by SISK - Range of concrete integrated vanities



GPO Dublin - Kavanagh Tuite Architects - Fit Out Dunwoody and Dobson- Concrete integrated sinks





Perpetua Gym Dublin - Fit Out by Pure Fit Out- Concrete Trough



Perpetua Gym Dublin - Fit Out by Pure Fit Out- Description: Concrete vanity top



The Mayson Hotel Dublin - O'Donnell O'Neill Architects - Fit Out by Pure Fit Out - Concrete sinks, shelf and wall caps



Perpetua Gym Dublin - Fit Out by Pure Fit Out- Concrete bench seating

DRECHSLER FAMILY

JOHN
BATESON

RORY & ALISON McD

DECLAN SHEEHAN



Trinity Business School - Joanne Byrne Designer - Branding by Vision Branding - Trinity Business School Donor Wall.



Lettermullen House - Peter Legge Architects - Build by Greentec - Concrete island and gables, hob surround and utility



Lettermullen House- Peter Legge Architects - Build by Greentec - Concrete island and gables, hob surround and utility



Lettermullen House- Peter Legge Architect - Build by Greentec - Concrete island and gables, hob surround and utility



Howth House - Brian Guckian Architect PAC Studio - Build by MOSTON - Concrete fire hearth



Zendesk External Signage - MOLA Architects - Truwood.



Zendesk Office Fitout - MOLA Architects - Fitout by Truwood - Concrete counters and food service area fit out



Beenleigh Rum Distillery Queensland 2014 - This is a 10 meter long wet cast in situ bar for Australia's oldest Rum Distillery.



Beenleigh Rum Distillery Queensland 2014 - This is a 10 meter long wet cast in situ bar for Australia's oldest Rum Distillery.



Wall mounted Wash Hand Basin. We can manufacture any style, size and colour of wash hand basin



4 meter long BBQ unit with integrated sink. Refer to workshop section for more images.



Project: 1 Windmill Lane - MOLA Architects - Build by SJG Group - Concrete mobile cafe tables

The Workshop



BBQ unit 4 meters in length with integrated concrete sink, fire pit and concrete seating





The Mayson Hotel concrete curing overnight in the workshop. We produced 99 sinks of 10 different sizes and in excess of 500 single



Concrete stair thread in VODOO black with anti slip inserts for AVOLON



Integrated sink and vanity for The Devlin Hotel



Curved large fire hearth plinth for restaurant in Cork, fresh from the form.



The Mayson Hotel Orange



Demolded reception counter Kevin Street Garda



Trinity Donor Wall





Imperial College of Surgeons in London Reception desk, post processing and mid seal





Forming the 4 meter BBQ



Camida reception desk in one single piece



Fitting Windmill Lane reception desk



Fitting Windmill Lane reception desk



Beenleigh Rum Distillery



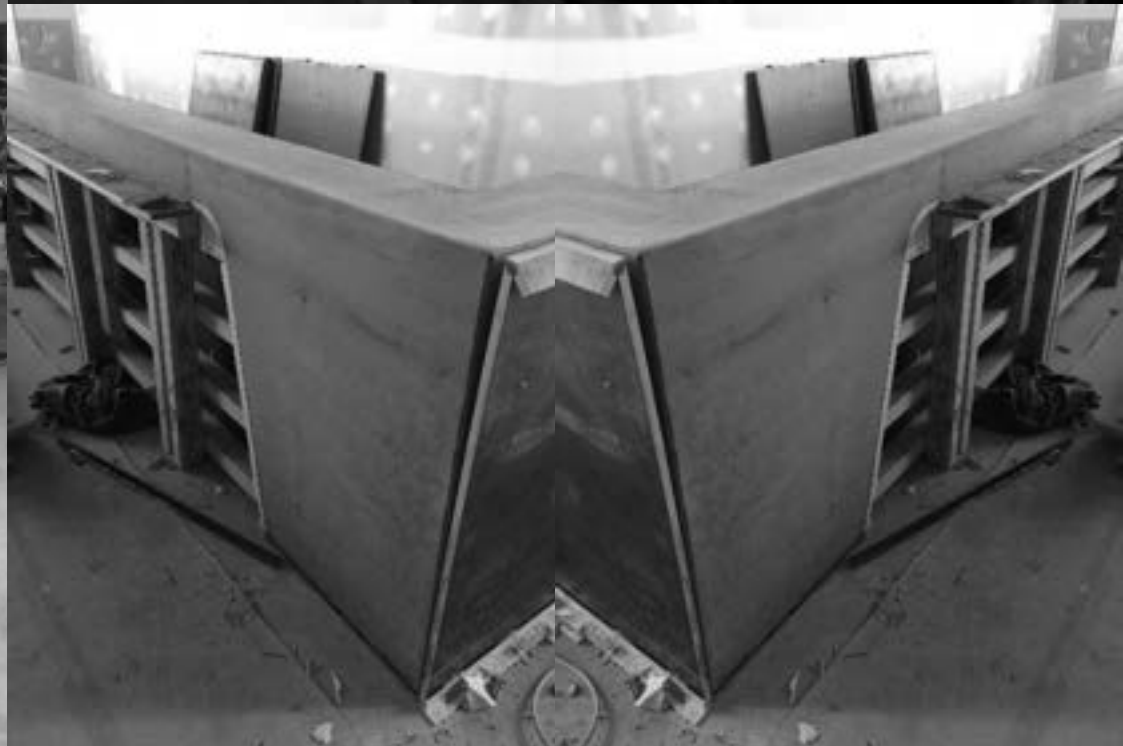
Beenleigh Rum Distillery



Beenleigh Rum Distillery



Beenleigh Rum Distillery



ST. JAMES'S GATE DUBLIN 8

ST. JAMES'S GATE DUBLIN 8

ST. JAMES'S GATE DUBLIN 8

ST. JAMES'S GATE DUBLIN 8



MacKenzie's Restaurant Dublin





CONCRETE FAIR
SPECIALISED CONCRETE SERVICES